



**Asking Price £940,000 Squirrels Close
Uxbridge, UB10 9NZ**

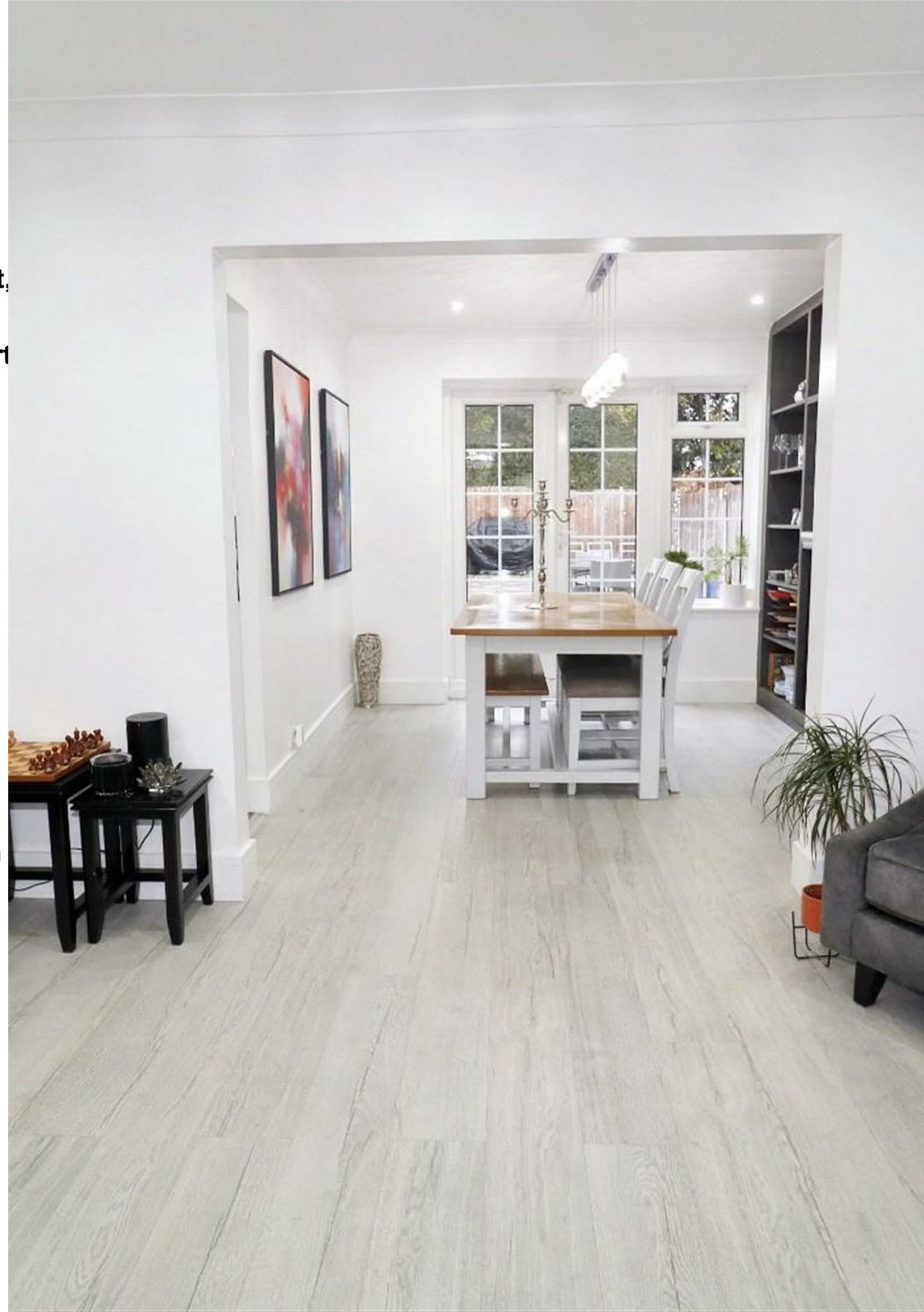


- Four/five bedrooms (including spacious master with en-suite)
 - Kitchen/breakfast room
- Large reception/dining/living area opening to the garden
 - Stylish shower room, en-suite and modern fittings
 - Driveway/private parking for a number of cars
- Excellent garden with patio, lawn and dedicated garden room
- High-quality finish: fitted wardrobes, inset lighting, air-conditioning unit, modern flooring
- Quiet close location in Uxbridge, convenient for amenities and transport
- Close to highly-rated schools: Hillingdon Primary and Vyners School

Set within a quiet cul-de-sac in Uxbridge, this beautifully presented and extended family home offers generous living space of approx. 1,932 sq ft, featuring a 23ft kitchen/breakfast room, large open-plan living/dining area with doors onto the garden, and four well-proportioned bedrooms including a spacious master with en-suite. Finished to a high standard throughout, the property includes modern bathrooms, inset lighting, fitted storage and air-conditioning (lounge & garden room), along with a landscaped rear garden and a versatile garden room ideal as a gym, office or studio. Private driveway parking completes the appeal.

Squirrels Close is ideally positioned for excellent local schooling, with Hillingdon Primary and Vyners School both highly regarded, and offers convenient access to Uxbridge town centre, Brunel University, Hillingdon Court Park and transport links including Hillingdon Underground Station (Metropolitan & Piccadilly lines) connecting into London and the A40/M40.

Local Authority: Hillingdon
Council Tax Band: G
Tenure: Freehold





Property Overview

A beautifully presented four/five-bedroom family home that delivers generous living space, stylish interiors and a superb private garden with versatile outbuilding accommodation. Nestled in a quiet close in Uxbridge, this residence combines contemporary finish and thoughtful design with family-friendly convenience.

Interior & Accommodation

Upon entry, you're greeted by a welcoming hallway leading into the bright living/dining space, which opens out via large sliding doors to the rear garden. The ground floor also includes a sizable reception room, and a sleek kitchen-breakfast room ideal for casual dining and family gatherings. Upstairs, the master bedroom is a generous retreat and benefits from an en-suite and built-in wardrobes. Three/four further comfortable bedrooms, all also include made-to-measure cupboards. A stylish shower room completes the first-floor accommodation.

Features & Finish

Fitted wardrobes in all bedrooms and excellent built-in storage solutions throughout provide practical ease of living. Both bathrooms and the shower room are fully contemporary: tiling, fittings and showers combine to offer a refined finish. The ground-floor reception and living/dining areas have been enhanced by high-quality flooring, smooth ceilings with inset lighting and a wall-mounted air-conditioning unit for added comfort fitted in Lounge 2 and the outhouse which is remotely controlled or via an App. The quiet, enclosed garden benefits from a paved terrace and a central lawn, extending out to a stylish garden room, perfect as a gym, studio, home-office or leisure space.

Exterior & Garden

Off-road parking for approximately five cars. An electric Vehicle charging point is also fitted to front of the property. The garden is an excellent asset: long, paved for low maintenance yet with a grassy central area. The accompanying garden room adds flexibility and could suit numerous purposes.

Location & Lifestyle

Situated in a desirable close in Uxbridge, the property benefits from excellent proximity to highly-regarded local schools. For example, Hillingdon Primary School (UB10 0PH) serves the borough and is classed as Outstanding. Additionally, for secondary education, Vyners School (UB10 8AB) holds an Outstanding rating. While formal catchment boundaries may vary year-to-year depending on applications and other criteria, living in this area affords strong access to these well-regarded schools. The peaceful setting ensures a comfortable family lifestyle, yet the location remains connected and practical for commuters and local amenities.

Summary

This is a very attractive family home that offers space, style and versatility in equal measure. The thoughtful layout, quality of finish and adaptable garden-room extend the appeal well beyond the standard four-bed offering. Viewings are highly recommended.





































**SECURE YOUR
OFFER TODAY
WITH A RESERVATION
DEPOSIT**



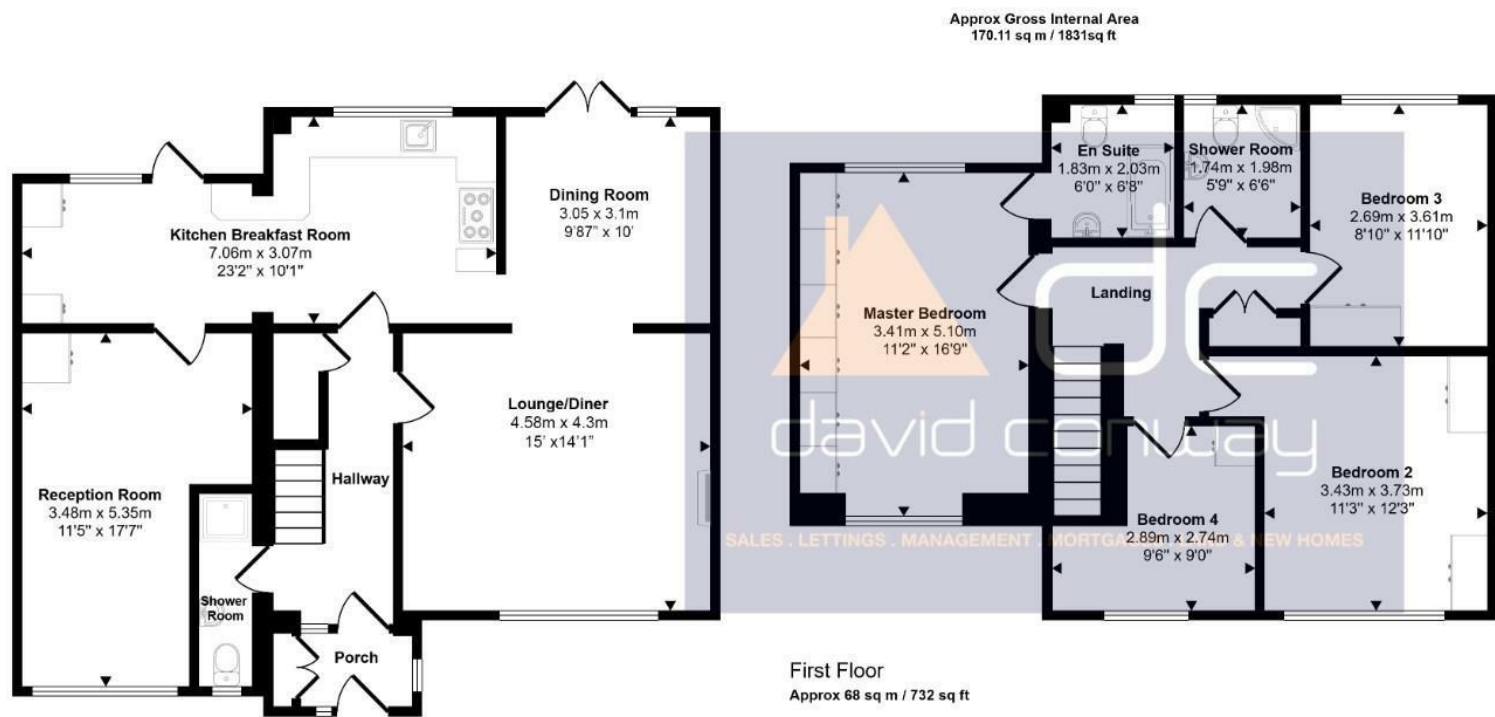
Terms apply



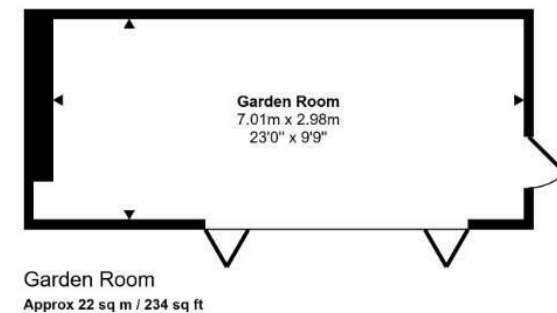




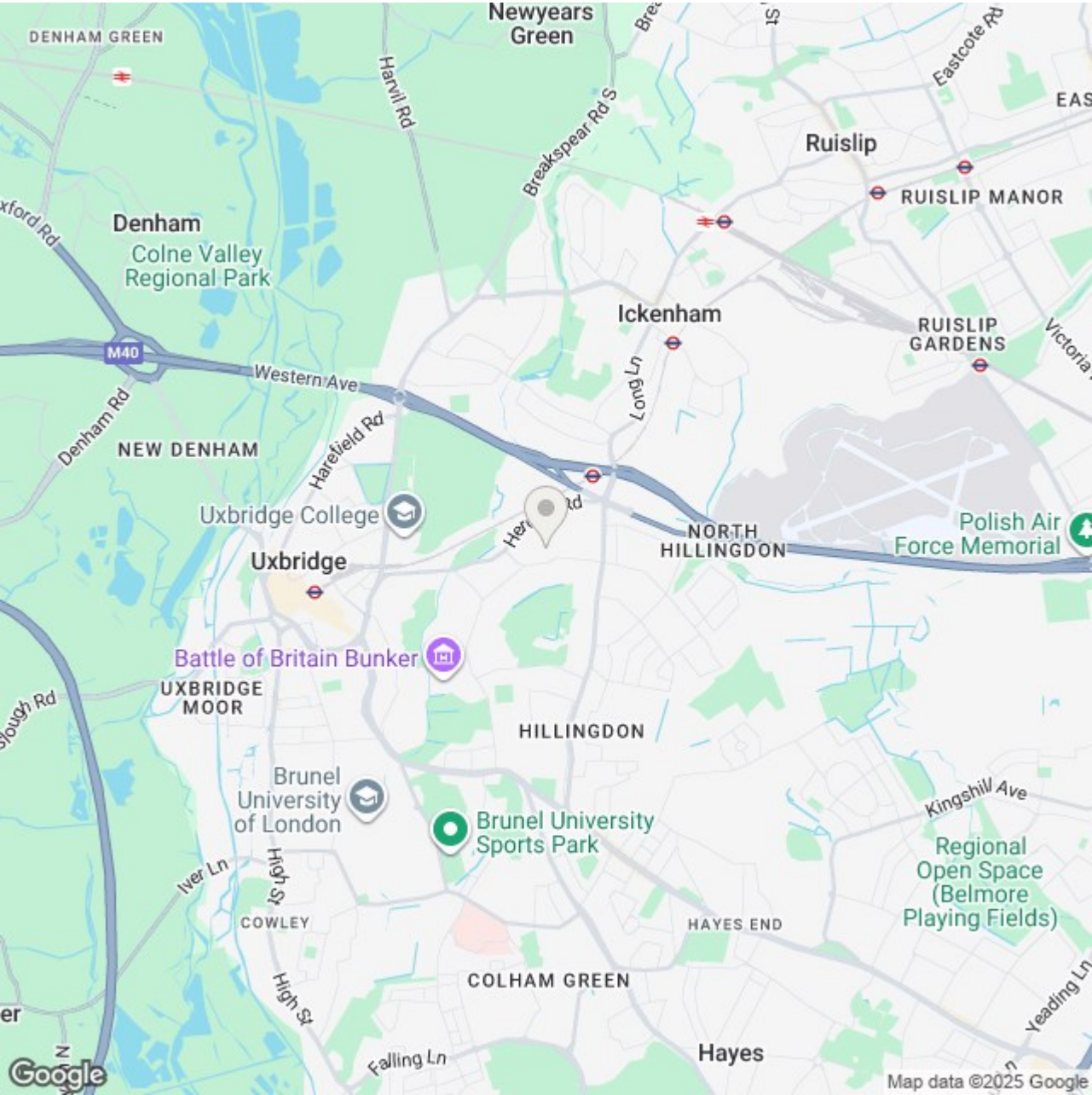




Ground Floor
Approx 80 sq m / 865 sq ft



This floorplan is only for illustrative purposes and is not to scale. Measurements of rooms, doors, windows, and any items are approximate and no responsibility is taken for any error, omission or mis-statement. Icons of items such as bathroom suites are representations only and may not look like the real items. Made with Made Snappy 360.



Energy Efficiency Rating

	Current	Potential
Very energy efficient - lower running costs		
(92 plus) A		
(81-91) B		
(69-80) C	69	80
(55-68) D		
(39-54) E		
(21-38) F		
(1-20) G		
Not energy efficient - higher running costs		

England & Wales

EU Directive 2002/91/EC

These particulars, whilst believed to be accurate are set out as a general outline only for guidance and do not constitute any part of an offer or contract. Intending purchasers should not rely on them as statements of representation of fact, but must satisfy themselves by inspection or otherwise as to their accuracy. No person in this firms employment has the authority to make or give any representation or warranty in respect of the property. A £2,000 reservation deposit is payable to secure the sale. This deposit forms part of the purchase funds and will be allocated on completion. The reservation deposit is subject to terms and conditions.



David Conway & Co Ltd
269 Northolt Road
South Harrow
HA2 8HS
0208 422 5222
Sales@davidconway.co.uk